

The Greatest Trek in the World

North Bengal is on the eastern fringe of India and offers wonderful locales for adventure tours to the Eastern Himalayas. An overnight journey from the state capital of KOLKATA or an exhilarating flight of 50 mins, we arrive at the very base of the Great Eastern Himalayas from where one can see Mt Kangchendzonga (8586 Mtrs), the third highest peak of the world. It is also the only 'eight thousander' in the world which can be seen from the plains. With its diversified flora and fauna along with ecstatic views and wonderfully hospitable people, North Bengal stands out as a very unique gateway to the Greater Himalayas.

The suggested tour will take you to the 'queen of hills' - Darjeeling and then on the trek route to Sandakphu where you will actually cross over the border into Nepal. Mind-blowing views of the Himalayan mountain range await you, including Kanchenzongpa and Everest

LOCATIONS IN THE TOUR(places of interest)

Darjeeling (2134 Mtrs):



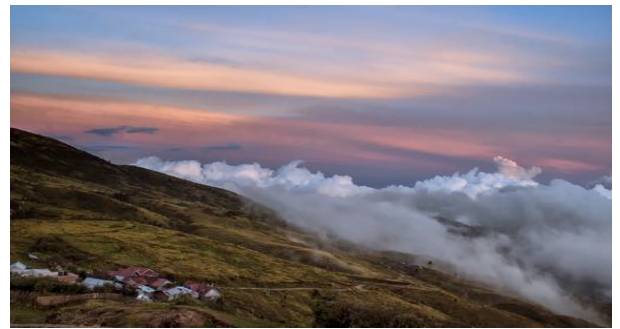
Tel: +91-9167201733 rupal@tierratravels.com

www.tierratravels.com

Delhi | Mumbai

Darjeeling is popularly known as the "Queen of the Hills" and produces the famous Darjeeling Tea, one of the world's finest teas. It is also home to the Darjeeling Himalayan Railway, a World Heritage site. Darjeeling commands one of the most beautiful views of the Mt. Kangchendzonpa range along with its sister peaks.

Tumling (2970 Mtrs):



Tumling is a small village in Nepal bordering India and is the first pit stop for trekkers on the way to Sandakphu (3636 Mtrs) and is known for its alpine beauty and the view it commands of Mt Kangchendzonga (8586 Mtrs), the third highest peak of the world. Tumling is 6 kms from Dhodrey and the trail is a well beaten path through forests of Rhododendron on very moderate gradient. Lunch at Tumling is followed by further exploration of the surroundings.

Tonglu (3000 Mtrs)



733 rupa
[tierratravel](#)
elhi | Mumbai



Tonglu is the top most point of this place with an altitude of 3000 Mtrs and a total population of 10. It is around 2 kms from Tunmaling but commands majestic views of Mt Kanchendzonga and the best sunrise.

Rimbick (2268 Mtrs):



Rimbick, situated at an altitude of 2286 Mtrs (7500 Ft.) on the western frontier of West Bengal is the last destination for the trekkers on the Sandakphu trail with Sikkim on one side and enormous wilderness on the other. Hotel Sherpa is the oldest and the best accommodation available in Rimbick run by the most prestigious Buddhist family of Rimbick. It is the dream place of any trekker, who is looking for a clean environment to rest after an arduous trek.

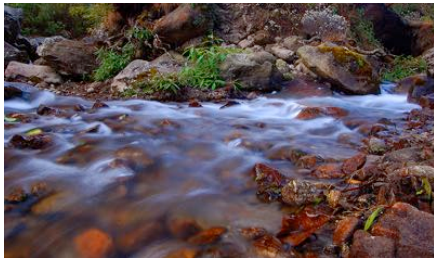
Sirikhola(1800 Mtrs)



tel: +91 9167201733 rupal@tierratravels.com

www.tierratravels.com

Delhi | Mumbai



Sirikhola is nestled deep in the Singalila National park. Sirikhola is a nature lover's paradise with green hills all around and a beautiful mountain river called **SIRI** flowing by the side. One can either trek on a well beaten path for 6 kms to reach this place or take a jeep for 4 kms and trek for 2 kms. Enjoy the beauty of nature and come back the same day.

DETAILED ITINERARY (6 nights,7 Days) ex Bagdogra

Day 1 : Pick up from New Jalpaiguri railway Station / Bagdogra airport and transfer to Darjeeling (84 Kms) via Rohini and Kurseong with breakfast at Kurseong tourist centre. Check in Hotel, have lunch and move around the Mall and visit the Mahakali Temple with shopping in the local market. Dinner and stay in Darjeeling

Day 2: Half day sightseeing of the Himalayan Mountaineering Institute, the zoological Park and Batasia loop. Optional: A ride on the Famous Darjeeling Himalayan Railway to Ghoom and back. Dinner and stay in Darjeeling

Day 3: After an early breakfast, transfer to Dhodrey (2700Mts)(42 Kms) via Maneybhanjan by car and start a trek for 6 kms through the forest of rhododendron and meadows to reach Tumling in Nepal. Lunch at Tumling. You will have the afternoon free to explore Tumling at leisure. Have an early dinner before retiring to the wooden cottages.

Day 4: After an early breakfast in Tumling, we trek up to Tonglu, a nice 1.5 hrs walk. We enjoy the view on the top, have lunch and come back to Tumling by evening.

Day 5: After breakfast we trek down to Dhodrey (6 kms) and start for Rimbick by car. Rimbick is another 40 kms from Dhodrey and we will take around 2 hrs to reach. Check in at Hotel Sherpa, have lunch and relax. In the evening move around the local market before dinner and rest.

Day 6: After breakfast, we trek for another 6 kms to a mountain settlement called Sirikhola, which is by the side of a mountain river and is in the middle of Singalila National Park. After lunch, we will go down to the river to enjoy the cold water of the river. We retire to Rimbick for the evening.

Day 7: Start for Bagdogra airport, a 6 hrs drive via Mirik, have lunch at Mirik and proceed towards Siliguri. Trip ends at NJP/ Bagdogra airport.

PACKAGE COST AND OTHER DETAILS

Tel: +91-9167201733 rupal@tierratravels.com

www.tierratravels.com

Delhi | Mumbai

Cost **per person** ex Bagdogra airport for the whole package will be

INR 33,000 for 6 people travelling together using Windamere Hotel OR

INR 28,000 for 6 people using Apartment Accommodation – Sushma Villas

This cost would include the following:

- 1) All transfers in 2 dedicated vehicles (Tavera, Innova or Scorpio) max 4 per car
- 2) All accommodations
 - Darjeeling: Twin sharing super deluxe rooms at **The Windamere OR Apartment accommodation at Sushma Villas**
 - Tumling: Shikhar Lodge (wooden cottages twin or triple sharing)
 - Rimbick: Hotel Sherpa (Twin sharing/ Single Occupancy available upon demand)
- 3) All meals: morning tea, breakfast, lunch, evening snacks tea and dinner and also meals during transit. In Darjeeling meals will be in premium restaurants on clients order basis
- 4) All porter Charges --one porter per person will be given
- 5) All guide Charges
- 6) Mineral water for the whole tour
- 7) Basic Medicines and first aid
- 8) Services of an experienced mountaineer for the whole tour

The cost will not include the following:

- 1) Any hard beverages
- 2) Travel insurance
- 3) Personal expenditure such as shopping or phone calls
- 4) Personal medicines for special medical conditions related to individuals
- 5) 3.5% GOI service tax

Tel: +91-9167201733 rupal@tierratravels.com

www.tierratravels.com

Delhi | Mumbai